



South Bayshore Drive From Darwin Street to Mercy Way

Project No.: 20210032

ISD Contract No.: E19-DTPW-12

Miami-Dade County
Department of Transportation and Public Works

April 27th, 2022



AGENDA

- Meeting Guidelines
- Team Introduction
- Project Description
- Design Details
- Summary
- Q&A Session



GUIDELINES

- In an effort to maintain a safe and respectable forum, we ask that participants abide by the following guidelines during the designated Q&A portion. Violators are subject to removal from meeting.
- All participants' microphones will remain muted, unless it is their turn to speak
- Raise hand to ask a question
- Profanity or inappropriate language will not be tolerated
- When speaking, be mindful of background noises
- Speaking time is limited to two minutes
- Violators are subject to removal from meeting



WELCOME

Commissioner Raquel A. Regalado
Miami-Dade County
Commission District 7





TEAM INTRODUCTION

- Presenters

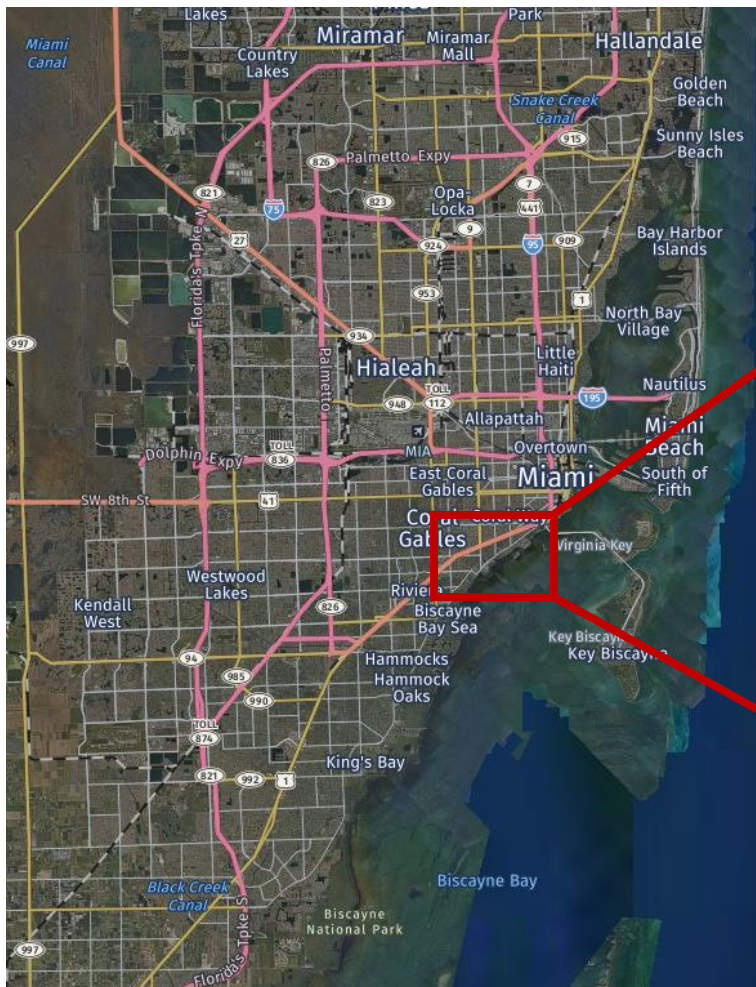
- **Barbara S. Mesa Valdes**, Project Manager, Highway Division, DTPW
- **Leonte I. Almonte, P.E.**, Design Consultant, Kimley-Horn and Associates, Inc.

- Panelists

- **Miguel Soria, P.E.**, Assistant Director of Highway, DTPW
- **Leandro J. Ona, P.E.**, Chief, Highway Division, DTPW
- **Fabiana Gonzalez-Batista, P.E.**, Plans Review and Design Section Manager, Highway Division, DTPW
- **Gabriela Ramirez, P.E.**, Design Consultant, Kimley-Horn and Associates, Inc.



LOCATION MAP



LENGTH OF PROJECT =
1.500 MILES



South Bayshore Dr. from Darwin St. to Mercy Way

- Commission District 7, Raquel A. Regalado.
- City of Miami Commission District 2, Ken Russell.
- Fully Funded with Road Impact Fees (RIF), District 2



PROJECTS IN THE AREA

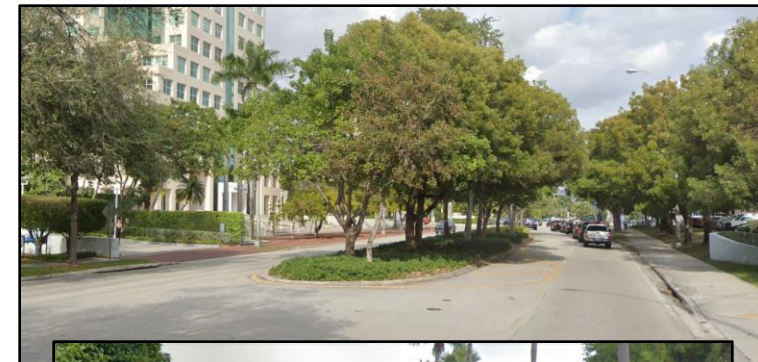
1. Commodore Trail Project
Improved trail user safety through safer crossings and pathways
2. Halissee Street sanitary sewer improvements project
New sewage pump station and sanitary sewer lines
3. Viscaya museum & gardens project
Proposed road diet/lane reduction along South Bayshore Drive





EXISTING CONDITIONS

- Lane configuration:
 - Darwin Street to Aviation Avenue – 2 southbound, 1 northbound
 - Aviation Avenue to East Fairview Street – 1 southbound, 1 northbound
 - East Fairview Street to Mercy Way – 2 southbound, 1 northbound
- Pavement needs rehabilitation.
- Sidewalk mainly along the east side of the road, not continuous.
- Faded pavement markings.





EXISTING CONDITIONS

- Streetlights on west side of the road.
- Northbound and southbound bus stops (some lack sidewalk).
- Signalized Intersections at:
 - Aviation Avenue
 - Kirk Street
 - Fair Isle Street
 - SW 17th Avenue (strain pole)
 - East Fairview Street
 - Mercy Way
- Midblock crossings:
 - Emathla Street (signal suspended on strain pole).
 - Darwin Street (with flashers/RRFBs).





EXISTING CONDITIONS

- Landscaping and trees on both sides of the roadway within the right of way.
- Private landscaping and improvements within the public right-of-way.
- Wetlands along the east side of Kennedy Park.
- Schools within corridor are:
 - Ransom Everglades School
 - Immaculate-La Salle High School





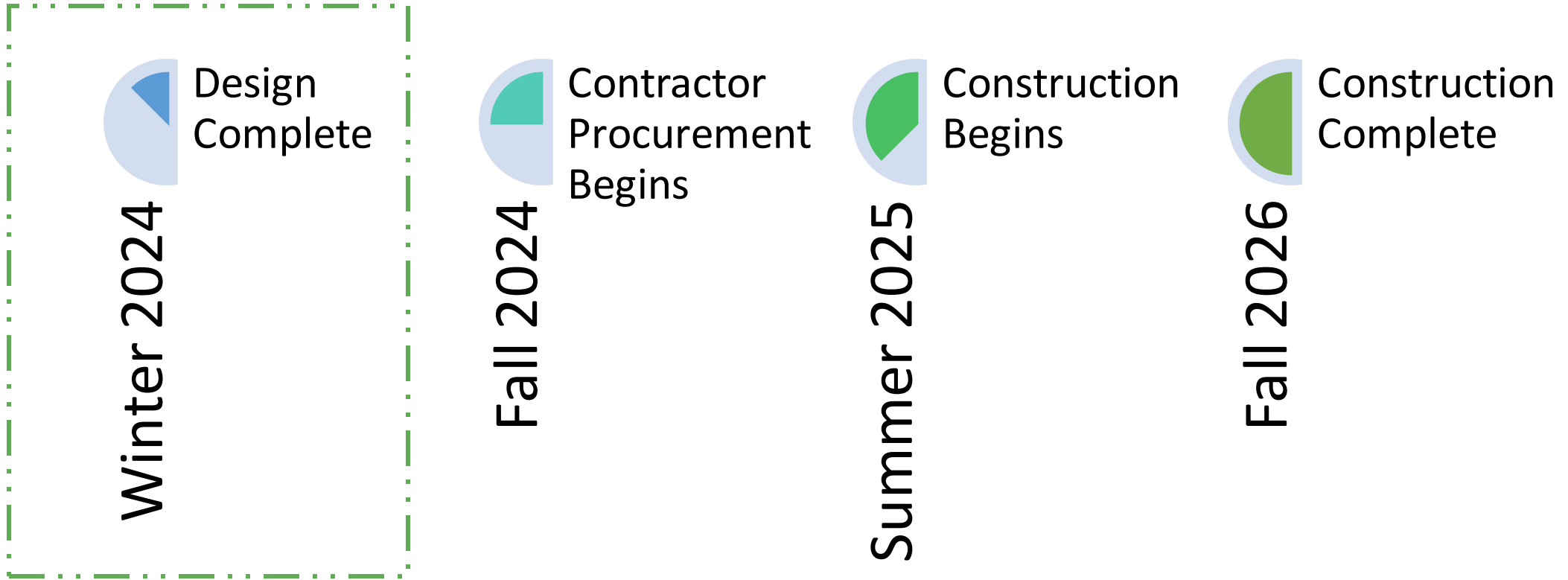
PROJECT PURPOSE AND NEED

- Provide continuous Pedestrian and Bicycle Facilities.
- Improve the connections to Parks, Trails and Transit facilities.
- Improve Drainage System:
 - Install new pump station.
 - Improve water quality for Biscayne Bay.
 - Mitigate existing flooding.
- Improve Traffic Operations and Safety:
 - Add exclusive left turn lanes.
 - Extend left turn bays.
 - New FDOT Standard Traffic Signal Mast Arms.



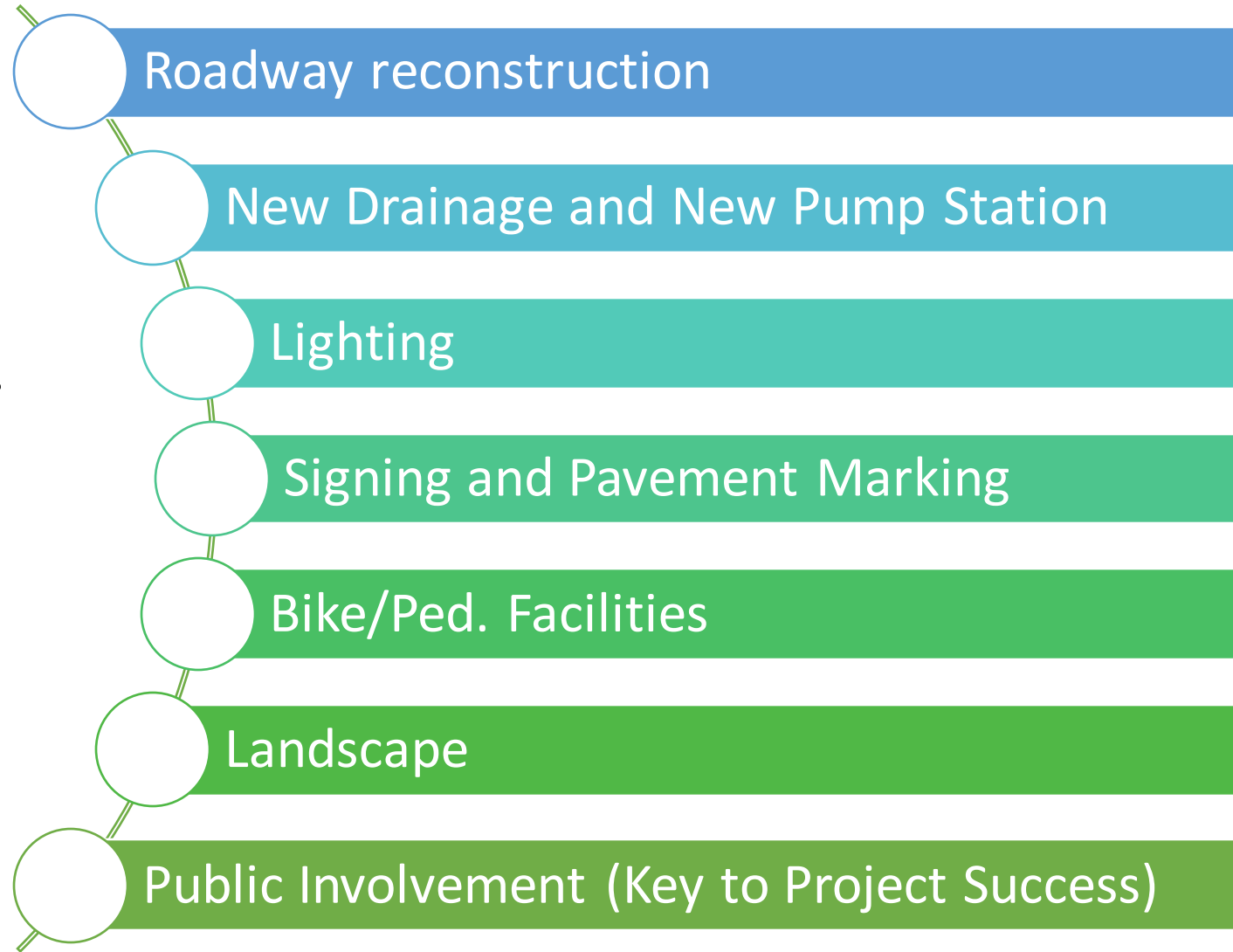


PRELIMINARY PROJECT SCHEDULE





PROJECT SCOPE





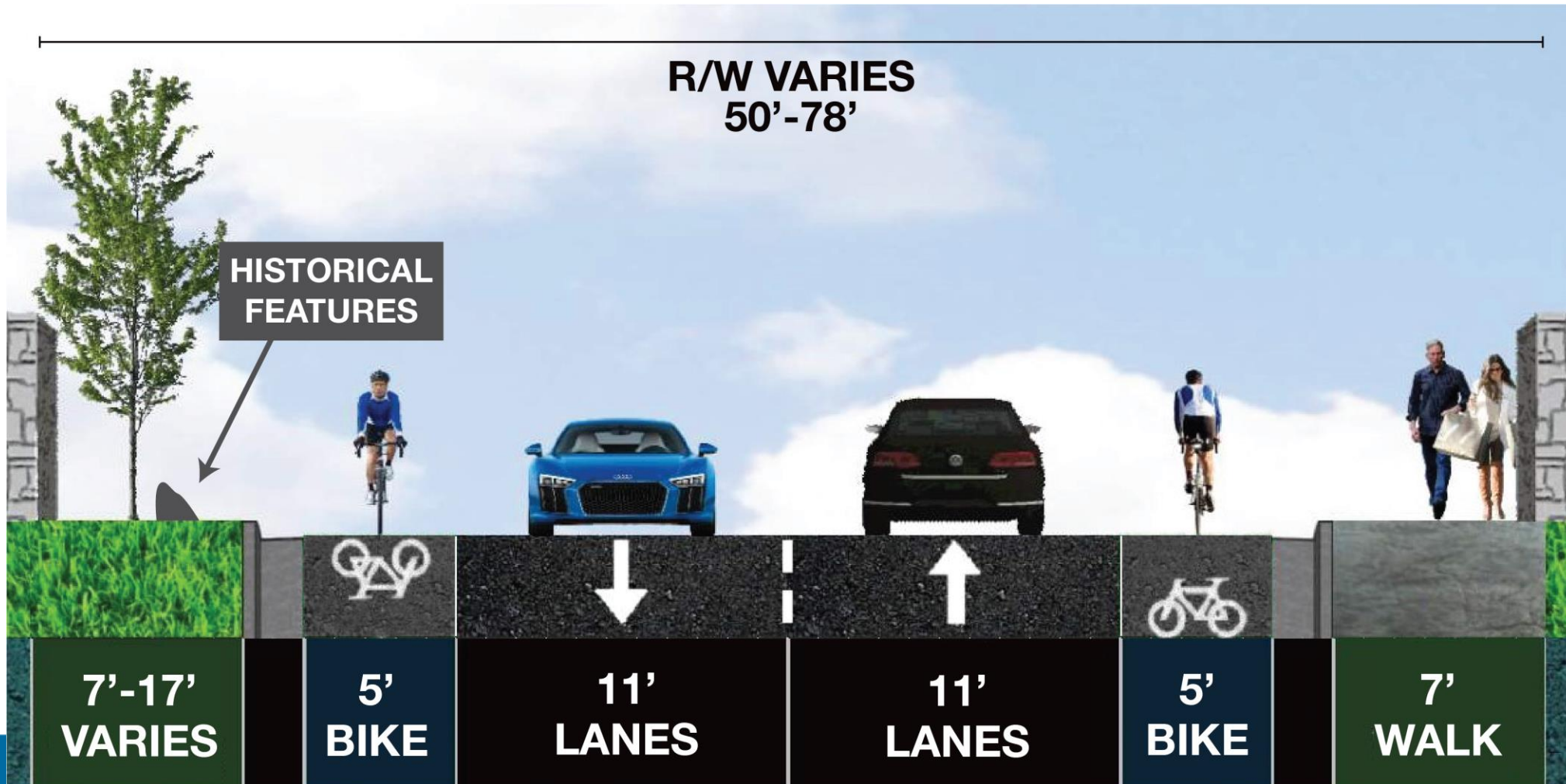
PROJECT SCOPE

- Reconstruction of the road from Aviation Avenue to Mercy Way
- Resurfacing from Darwin Street to Aviation Avenue and north of Mercy Way
- Addition of curb and gutter
- Drainage Improvements
 - Construction of stormwater collection system
 - Pump station
 - Exfiltration trenches
 - Pollution control boxes
- New and updated signing and pavement marking
- Traffic signal improvements
- Lighting improvements
- Bicycle facilities – 2 alternatives: a) Unprotected Bike Lanes; b) Shared-Use Path (SUP)



UNPROTECTED BIKE LANES ALTERNATIVE

Typical Section





LEGEND

Unprotected bike lanes from Aviation Avenue to Mercy Way



UNPROTECTED BIKE LANES ALTERNATIVE

Impacts to trees and existing historical features



- ASPHALT PAVEMENT
- PROPOSED CURB AND GUTTER
- SOD
- PROPOSED SIDEWALK



UNPROTECTED BIKE LANES ALTERNATIVE

Alternative Pros/Cons

Pros:

- Provides on-road bike facilities

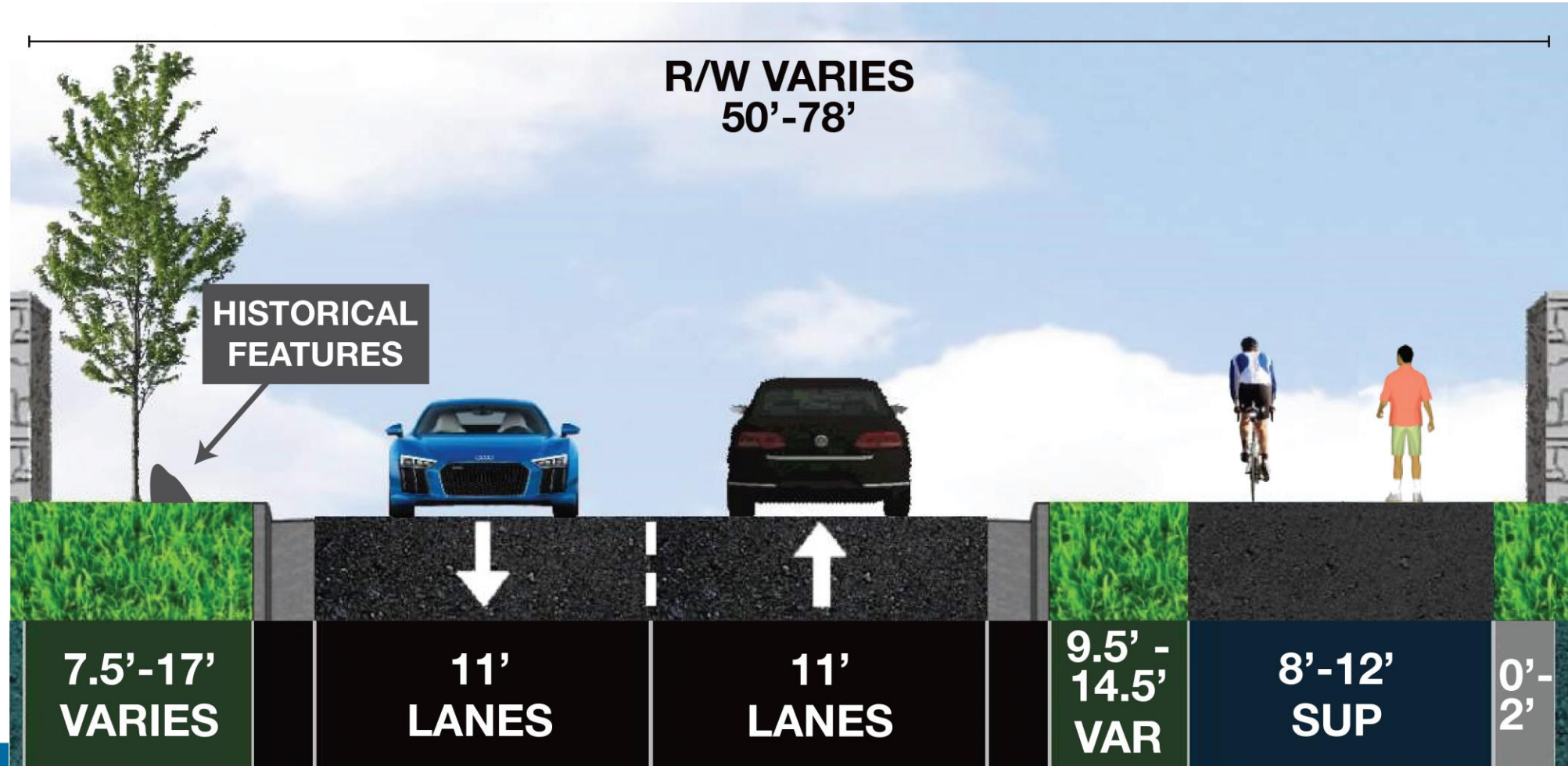
Cons:

- Does not provide **direct** connectivity to Commodore Trail within the limits of the project
- Does not provide direct connection to Kennedy Park
- Major impact to existing trees
- Major impacts to historical features
- Places bicyclist and pedestrians adjacent to vehicular traffic



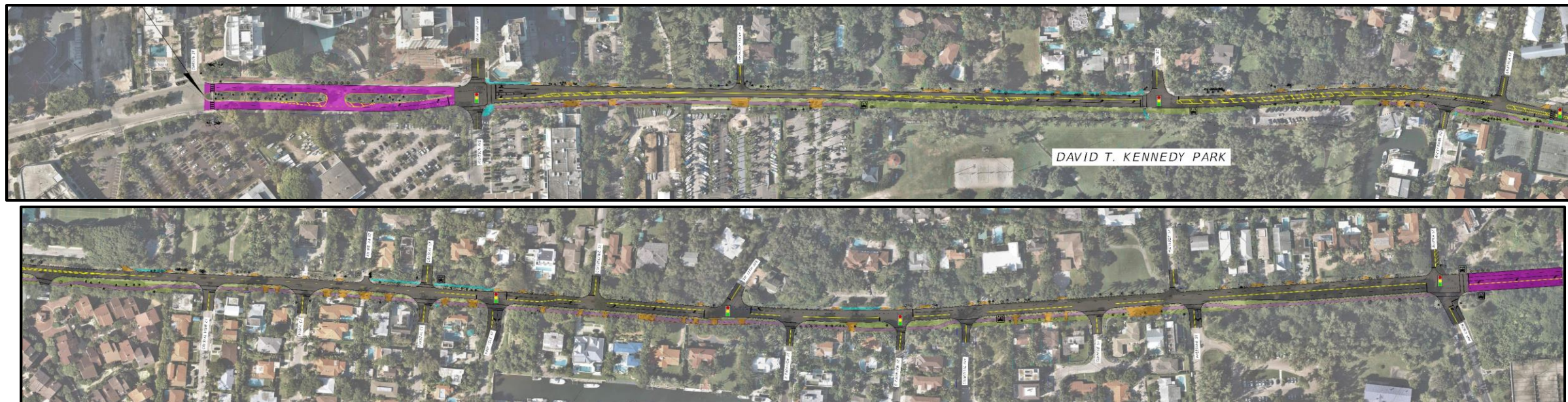
SHARED-USE PATH ALTERNATIVE

Typical Section





SHARED-USE PATH ALTERNATIVE



- The Shared-use path will begin at Aviation Avenue
- The path will connect to the existing shared use path in Kennedy Park
- The path will then resume south of Rockerman Road



SHARED-USE PATH ALTERNATIVE

Treatments to Minimize Impacts



- ASPHALT PAVEMENT
- PROPOSED CURB AND GUTTER
- SOD
- SHARED-USE PATH

Shared-use path meanders, narrows, and bifurcates to minimize tree impacts



SHARED-USE PATH ALTERNATIVE

Alternative Pros/Cons

Pros:

- Provides connectivity to Commodore Trail (Shared-Use Path to Shared-Use Path)
- Provides connection to Kennedy Park from Shared-Use Path
- Reduces impacts to existing trees
- Reduces impacts to historical features
- Places bicyclist and pedestrians away from traffic

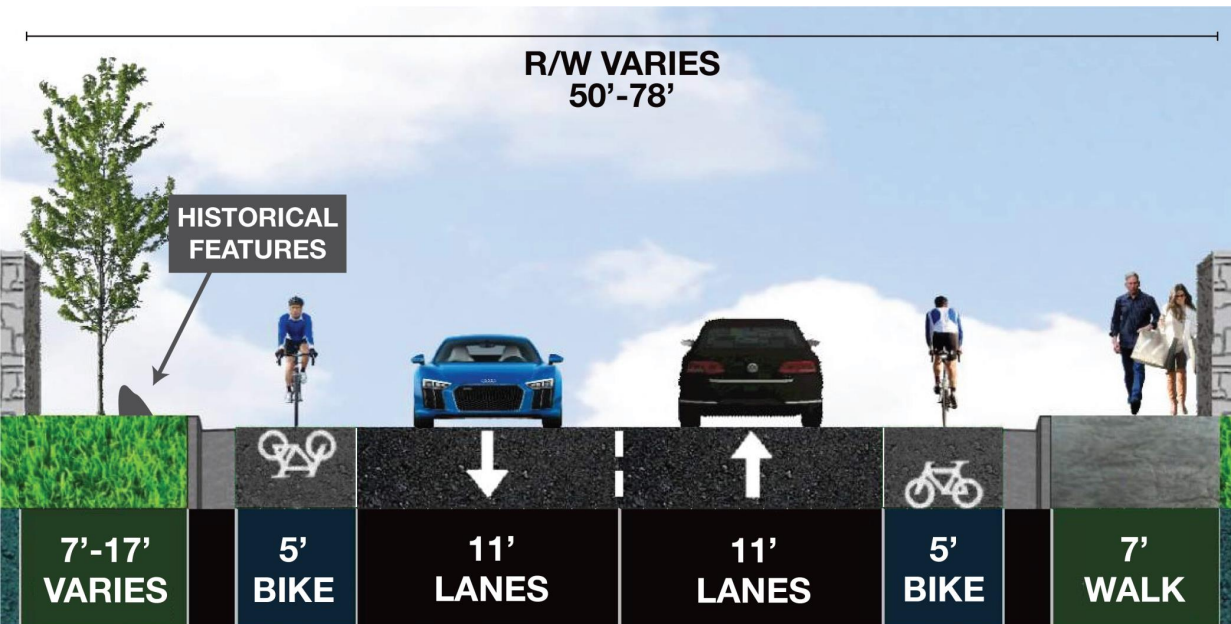
Cons

- Does not provide on-road bike facilities

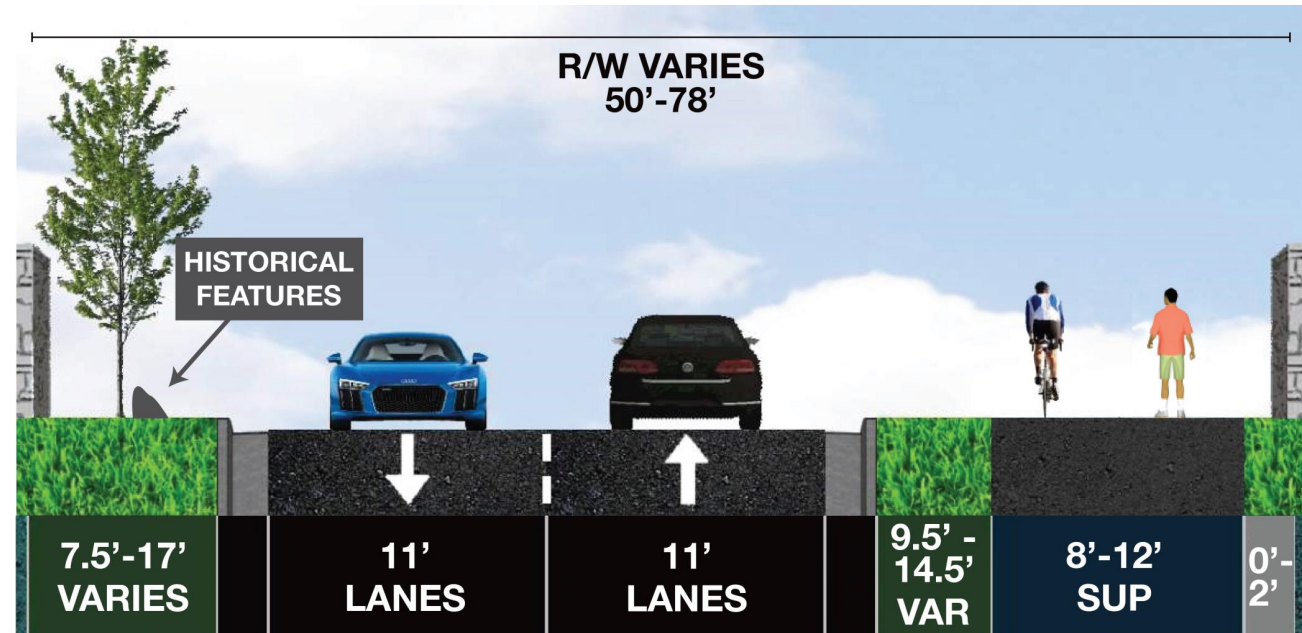


We would like to hear from you!

ALTERNATIVE UNPROTECTED BIKE LANES



ALTERNATIVE SHARED-USE PATH





QUESTIONS & ANSWERS

REMINDERS:

- Raise hand to ask a question –if dialing in, press *9
- Profanity or inappropriate language will not be tolerated
- When speaking, be mindful of background noises
- Speaking time is limited to two minutes per speaker
- Violators are subject to removal from meeting



- Email DTPWOutreach@miamidade.gov to ask additional questions
- Emailed questions will be addressed after the meeting

The image is a horizontal composition of two photographs of a tropical beach at night. The left half is tinted with a vibrant green color, while the right half is tinted with a deep blue color. A large, white, stylized letter 'M' is superimposed over the center of the image, acting as a frame for the text. The background shows several tall palm trees in the foreground and a multi-story building with lit windows in the background. The beach is visible in the lower portion of the image.

THANK YOU