



South Bayshore Drive
From Darwin Street to Mercy Way

Project No.: 20210032
ISD Contract No.: E19-DTPW-12

Miami-Dade County
Department of Transportation and Public Works

June 21st, 2023

Kimley»Horn





AGENDA

- Meeting Guidelines
- Team Introduction
- Project Description
- Design Details
- Summary
- Q&A Session



GUIDELINES

- In an effort to maintain a safe and respectable forum, we ask that participants abide by the following guidelines during the designated Q&A portion. Violators are subject to removal from meeting.
- All participants' microphones will remain muted, unless it is their turn to speak
- Raise hand to ask a question
- Profanity or inappropriate language will not be tolerated
- When speaking, be mindful of background noises
- Speaking time is limited to two minutes
- Violators are subject to removal from meeting



WELCOME

Commissioner Raquel A. Regalado
Miami-Dade County
Commission District 7





TEAM INTRODUCTION

- Presenters

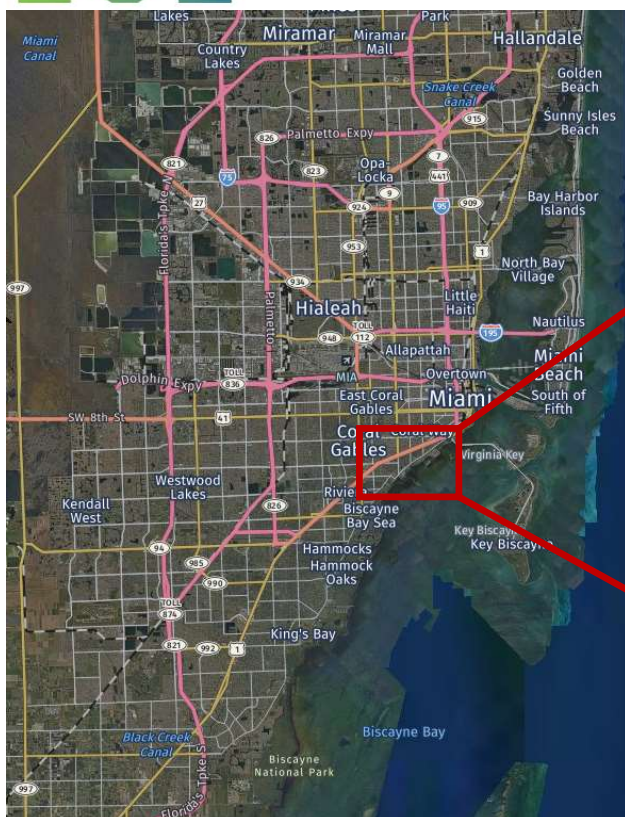
- **Barbara S. Mesa Valdes**, Project Manager, Highway Division, DTPW
- **Leonte I. Almonte, P.E.**, Design Consultant, Kimley-Horn and Associates, Inc.

- Panelists

- **Miguel Soria, P.E.**, Assistant Director of Highway, DTPW
- **Leandro J. Ona, P.E.**, Chief, Highway Division, DTPW
- **Joan Fabian, P.E.**, Project Manager, Highway Division, DTPW
- **Gabriela Ramirez, P.E.**, Design Consultant, Kimley-Horn and Associates, Inc.
- **Alejandro Toural, P.E.**, Design Consultant, Kimley-Horn and Associates, Inc.



LOCATION MAP



LENGTH OF PROJECT =
1.500 MILES



South Bayshore Dr. from Darwin St. to Mercy Way

- Commission District 7, Raquel A. Regalado.
- City of Miami Commission District 2.
- Fully Funded with Road Impact Fees (RIF), District 2



PROJECTS IN THE AREA

1. Commodore Trail Project
Improved trail user safety through safer crossings and pathways
2. Halissee Street sanitary sewer improvements project
New sewage pump station and sanitary sewer lines
3. Viscaya museum & gardens project
Proposed road diet/lane reduction along South Bayshore Drive





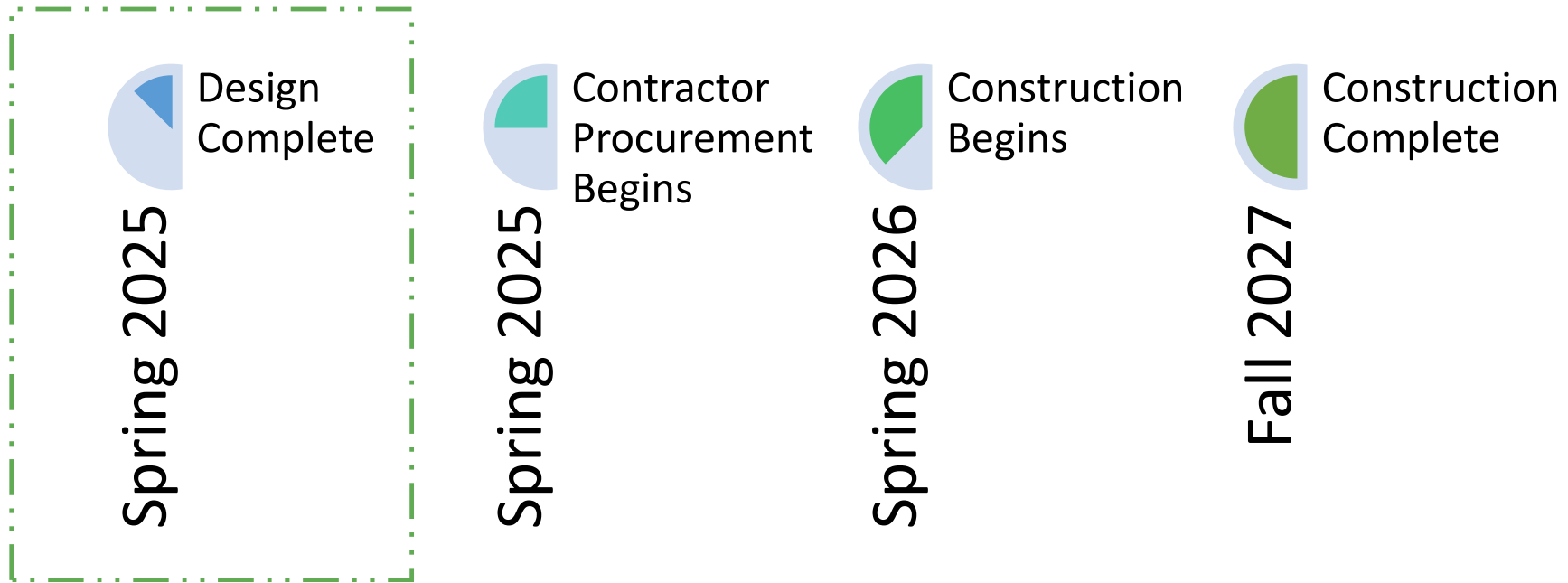
PROJECT PURPOSE AND NEED

- Provide continuous Pedestrian and Bicycle Facilities.
- Improve the connections to Parks, Trails and Transit facilities.
- Improve Drainage System:
 - Install new pump station.
 - Improve water quality for Biscayne Bay.
 - Mitigate existing flooding.
- Improve Traffic Operations and Safety:
 - Add exclusive left turn lanes.
 - Extend left turn bays.
 - New FDOT Standard Traffic Signal Mast Arms.



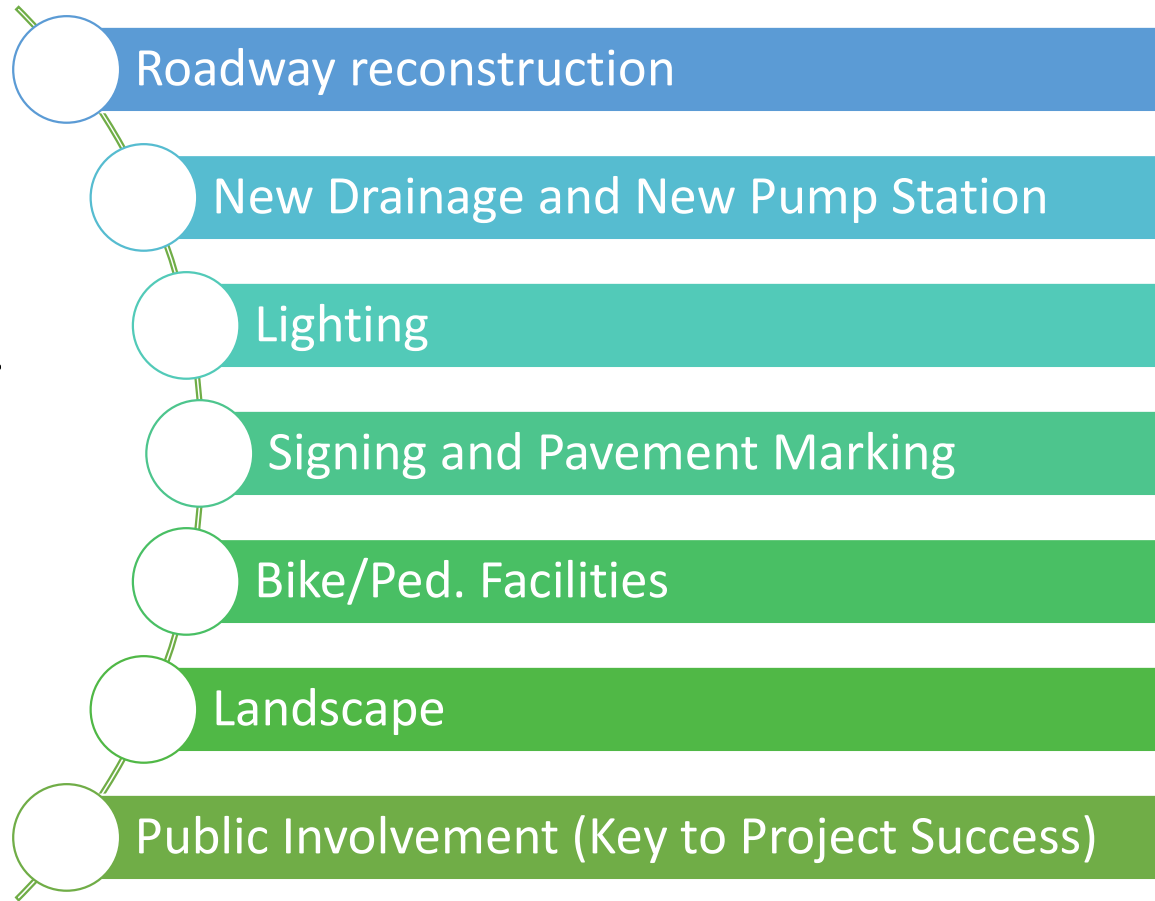


PRELIMINARY PROJECT SCHEDULE





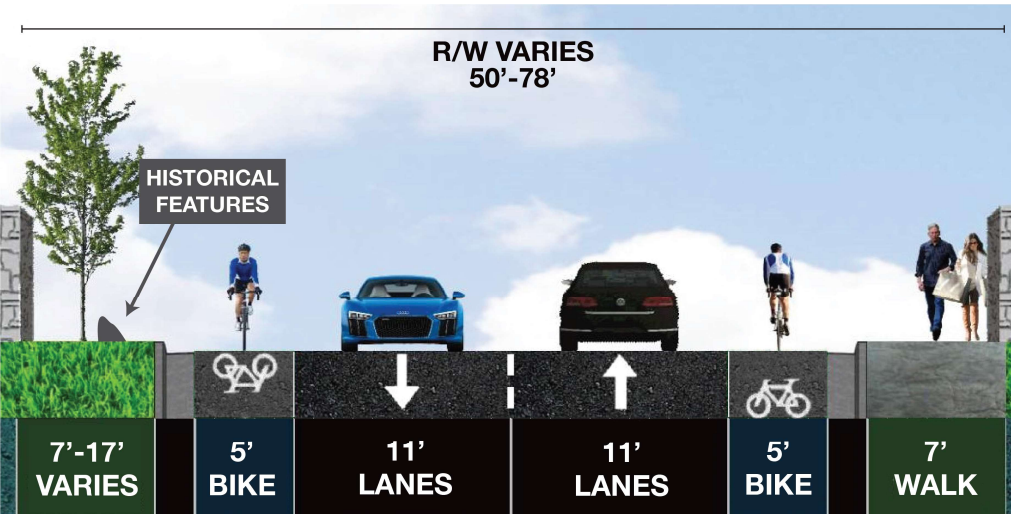
PROJECT SCOPE





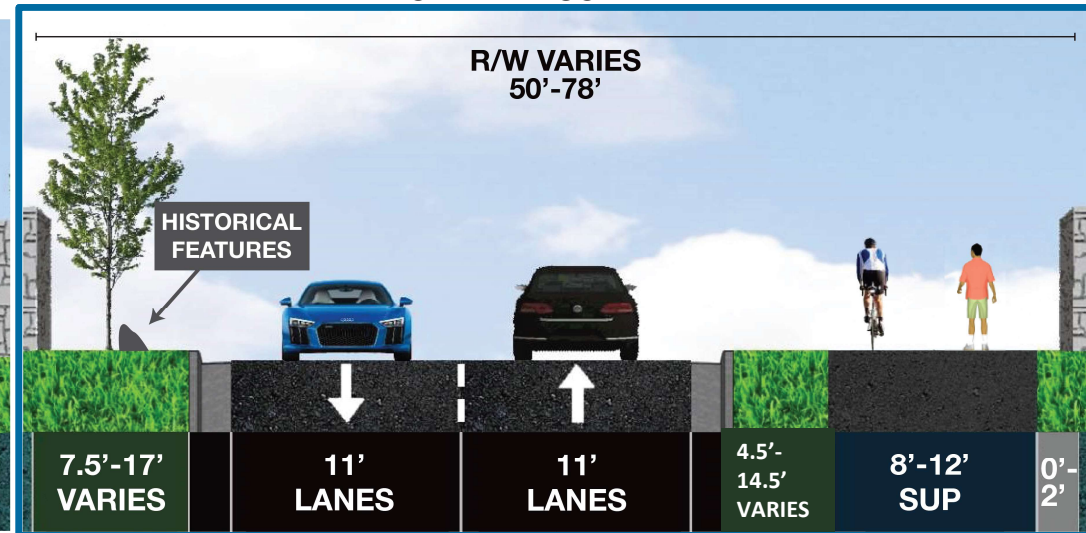
PUBLIC MEETING 1

ALTERNATIVE UNPROTECTED BIKE LANES



ALTERNATIVE SHARED-USE PATH

✓ **SELECTED**

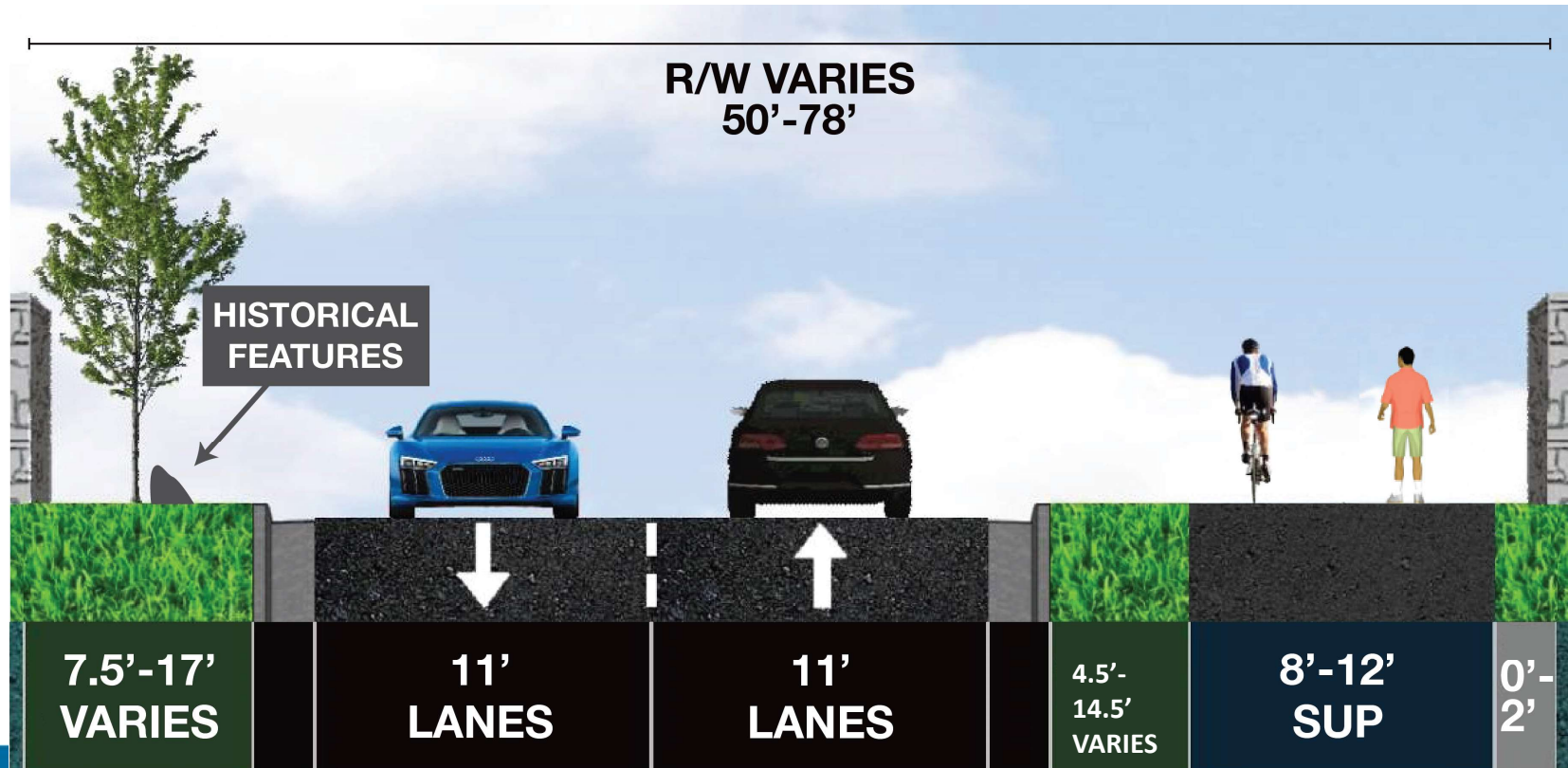


- ✓ Provides connectivity to Commodore Trail (Shared-Use Path to Shared-Use Path)
- ✓ Provides connection to Kennedy Park from Shared-Use Path
- ✓ Reduces impacts to existing trees
- ✓ Reduces impacts to historical features
- ✓ Places bicyclist and pedestrians away from traffic



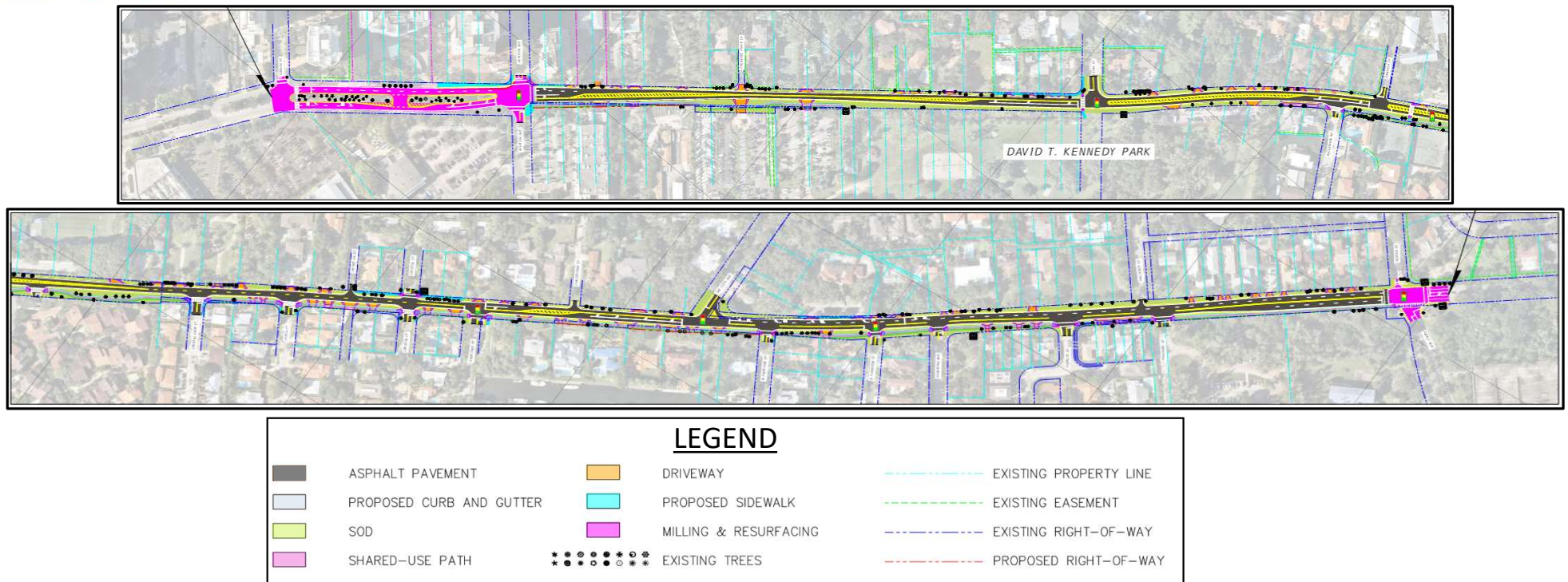
SHARED-USE PATH ALTERNATIVE

Typical Section





Design Layout



- The Shared-use path will begin at Aviation Avenue
- The path will connect to the existing shared use path in Kennedy Park
- The path will then resume south of Rockerman Road

Improvements to South Bayshore Drive from Darwin Street to Mercy Way

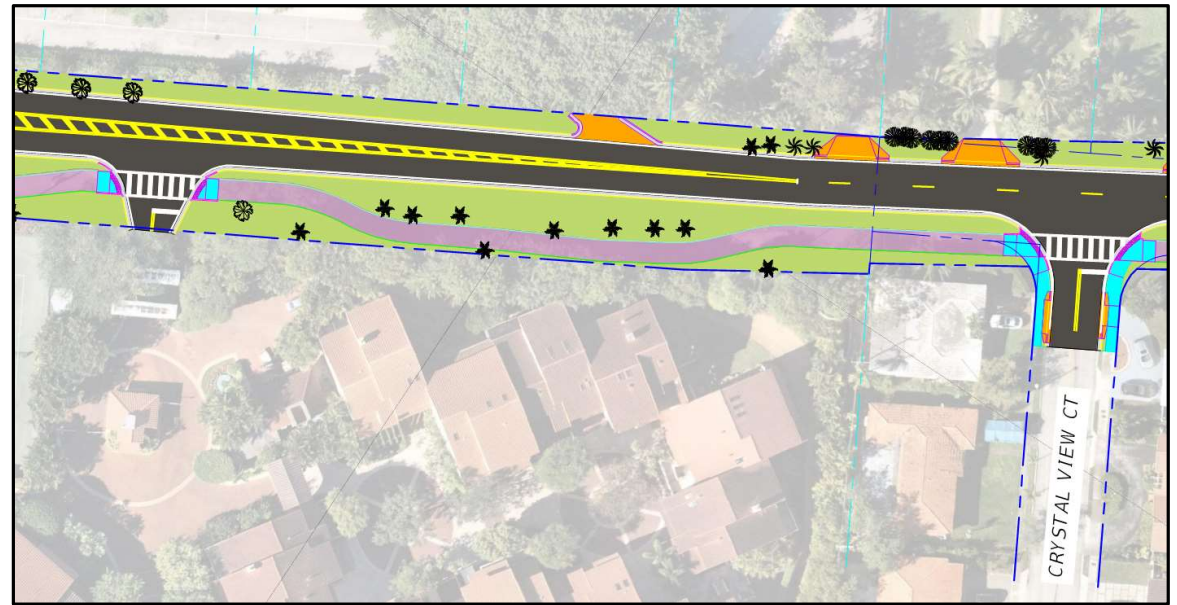
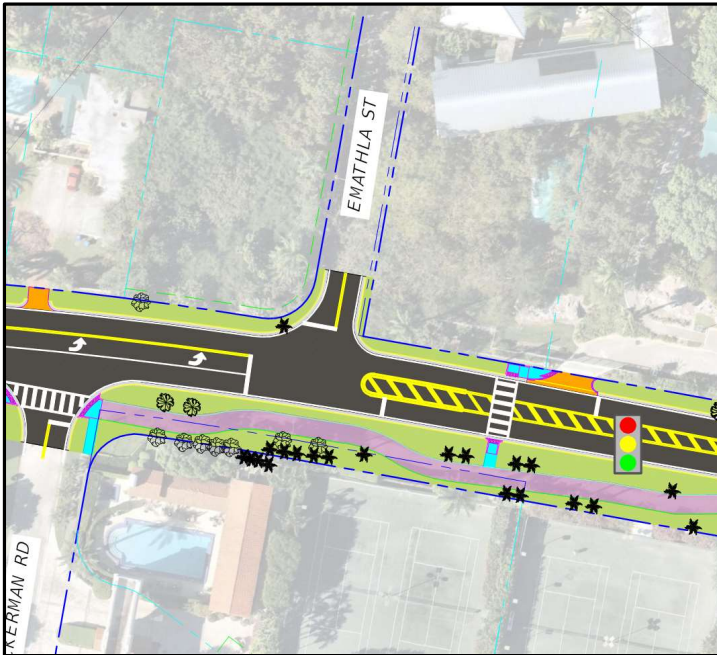
Kimley»Horn





Design Layout

Treatments to Minimize Impacts



Shared-use path meanders, narrows, and bifurcates to minimize tree impacts



Pump Station at Kennedy Park

	Option 1	Option 2	Option 3
Footprint	Largest	Moderate	Smallest
Cost	Highest	Moderate	Lowest
Wetland Impact	Highest	Lesser	Moderate
Noise Impact to Residents	Moderate	Lesser	Highest

With the pump station:

- ✓ Improve water quality for Biscayne Bay.
- ✓ Mitigate existing flooding.

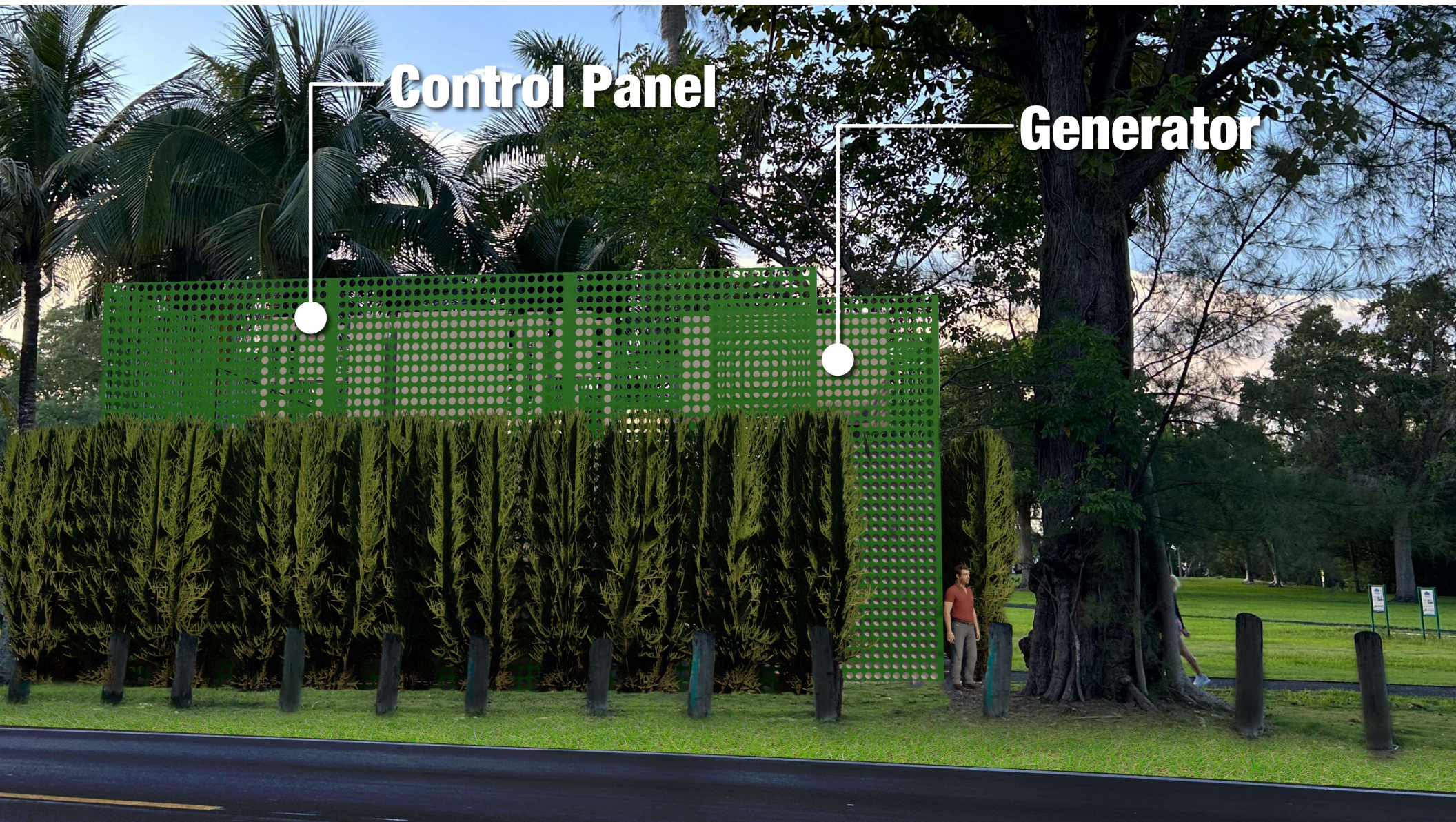




Improve

Control Panel

Generator





QUESTIONS & ANSWERS

REMINDERS:

- Raise hand to ask a question –if dialing in, press *9
- Profanity or inappropriate language will not be tolerated
- When speaking, be mindful of background noises
- Speaking time is limited to two minutes per speaker
- Violators are subject to removal from meeting



- Email DTPWOutreach@miamidade.gov to ask additional questions
- Emailed questions will be addressed after the meeting



THANK YOU